



C-ROB



California Rehabilitation Oversight Board

NOTICE OF PUBLIC MEETING

California Rehabilitation Oversight Board

The California Rehabilitation Oversight Board (C-ROB) will meet on Wednesday, June 5, 2019, from 9:30 a.m. to 3:30 p.m. at California State University, Sacramento, Modoc Hall, Willow Suites, 3000 State University Drive East, Sacramento, CA 95819.

Campus Map and driving directions are available at: <http://www.csus.edu/campusmap>. Parking on campus is \$6. Permits may be purchased at self-serve kiosks throughout the parking lots. Parking rules are enforced 24-hours a day.

This notice can be accessed electronically through the Office of the Inspector General's internet address: <http://www.oig.ca.gov>.

A copy of the Agenda is enclosed.

If you would like to submit written materials pertaining to an agenda item for distribution to board members in advance of the meeting, please submit the materials to the address below no later than twelve o'clock noon (12:00 p.m.) on Monday, June 3, 2019, to allow staff time to distribute them to interested persons who have requested notice of board meetings.

Fax: (916) 255-1403

Mail: See address listed below.

If you need additional information, please call (916) 255-1391 or write to:

**Linda Whitney, Board Secretary
Office of the Inspector General
10111 Old Placerville Road, Suite 110
Sacramento, CA 95827**

The meeting location is architecturally accessible to persons with physical disabilities. Persons who need auxiliary aids or other assistance for effective participation, should phone Linda Whitney at (916) 255-1391 or TTY (800) 735-2929 no later than five (5) working days prior to the board meeting.

Agenda Item #3



C-ROB



California Rehabilitation Oversight Board

AGENDA

Date: Wednesday, June 5, 2019
Time: 9:30 a.m. to 3:30 p.m.
Location: California State University, Sacramento
Modoc Hall, Willow Suites
3000 State University Drive East
Sacramento, CA 95819

Open Session

1. Call to order
2. Introduction and establish quorum
3. Review agenda
4. Review and approve minutes from the April 17, 2019, board meeting
5. Executive Director Updates
 - California State Auditor Rehabilitative Programs Audit
6. Board discussion regarding the C-ROB Mission & Vision Statements
7. Board decision regarding the C-ROB Mission & Vision Statements
8. Presentation: California Department of Corrections & Rehabilitation
 - Community Programming Overview
 - Prison-to-Employment Initiative
9. Presentation: Department of Adult Parole Operations
 - Parole Collaboration and Reentry
10. Presentation: CDCR Community Programs
 - Amity Foundation
 - Chrysalis
 - Coalition for Responsible Community Development
11. Presentation: California Correctional Health Care Services
 - Medication Assisted Treatment (MAT)

Gavin Newsom, Governor

12. Future board meeting schedule

13. Future agenda items

14. Public comment

- The board will accept public comment on any matter under its jurisdiction. Speakers are asked to limit their comments to three (3) minutes. The board cannot act on any public comment or other matters not on the agenda.

15. Adjournment

THE ORDER OF BUSINESS MAY BE CHANGED WITHOUT NOTICE. Notice is hereby given that the order of consideration of matters on this agenda may be changed without prior notice. The board will recess for a lunch break, if necessary.

Additional information on the California Rehabilitation Oversight Board and all public notices for meetings may be viewed and downloaded from the Office of the Inspector General's website at www.oig.ca.gov.

Individuals requiring accommodation for disabilities (including interpreters and alternative formats) should contact Linda Whitney at (916) 255-1391 or TTY (800) 735-2929 at least five (5) working days prior to the scheduled meeting.

Agenda Item #4

California Rehabilitation Oversight Board Minutes April 17, 2019 Meeting

The California Rehabilitation Oversight Board (C-ROB) met in open session at 9:30 a.m. on April 17, 2019, at the CDAA, The Training Center at CDAA, (3rd floor of the Elks Tower Building), 921 11th Street, Suite 300, Sacramento, CA 95814.

Board Members present: **Roy Wesley**, Inspector General (Chairman); **Raul Arambula**, MA, Intersegmental Support (Designee for Eloy Ortiz Oakley, Chancellor, California Community Colleges); **William Arroyo, M.D.**, Regional Medical Director, Los Angeles County Department of Mental Health (Speaker of the Assembly Appointee); **Ralph Diaz**, Secretary, Department of Corrections and Rehabilitation (CDCR); **Brenda Grealish**, Assistant Deputy Director, Mental Health and Substance Use Disorder Services, (Designee for Jennifer Kent, California Department of Health Care Services); **Darren Thompson**, Sheriff, County of San Benito (Governor Appointee); **Susan Turner**, Professor, University of California, Irvine (President of the University of California appointee); and **Carolyn Zachry**, Administrator, Adult Education Office, Career and College Transition Division, (Designee for Tony Thurmond, Superintendent of Public Instruction).

Board Members absent: **Michael Daly**, Chief Probation Officer for the County of Marin (Senate Committee on Rules appointee); **George Maynard**, Deputy Director of Hospital Strategic Planning & Implementation (Designee for Stephanie Clendenin, Director (A), California Department of State Hospitals); and **Jennie Singer**, Professor, California State University, Sacramento (Chancellor of California State University appointee).

Office of the Inspector General staff: Chuck Rufo, Executive Director; James C. Spurling, Counsel to the Board; Nico Gilbert-Ingelsrud, Rehabilitation Analyst; and Linda Whitney, Board Secretary.

Presenters:

CDCR:

Kevin Hoffman

Paws for Life:

Jon Grobman

Alex Toner

Mallie

HealthRight 360:

Ray Macias

California State Auditor:

Aaron Fellner

Matt Gannon

Public Comments:

Mary Lou Garcia

Hellan Dowden

Item 1. Call to order

Chairman Wesley called the meeting to order at 9:30am.

Item 2. Introduction and establish quorum

Chairman Wesley introduced the Office of the Inspector General (OIG) staff participating in the meeting. It was noted that a quorum would be established later in the meeting.

Item 3. Review agenda

There were no comments concerning the agenda.

Item 4. Review and approve minutes from the January , 2018 board meeting

Once a quorum was established, the minutes from the public session were approved without changes. William Arroyo moved to approve the minutes and Brenda Grealish seconded the motion. Carolyn Zachry, Raul Arambula, and Susan Turner voted to approve the minutes. Darren Thompson abstained from voting.

Next the board reviewed the minutes from the closed session. William Arroyo moved to approve the closed session minutes, and Brenda Grealish seconded the motion. Carolyn Zachry, Raul Arambula, and Susan Turner voted to approve the minutes. Darren Thompson abstained from voting.

Item 5. Executive Director updates

Mr. Rufo reported that since our last meeting, the California State Auditor has published their report. Recommendations for C-ROB are listed on page 47. The auditor recognizes that C-ROB has the expertise for oversight, but does not have sufficient resources, and that funding and statutory authority would be needed to carry out the recommendations.

Item 6. Board discussion regarding the California State Auditor Rehabilitative Programs Audit

James Spurling led the discussion regarding the California State Auditor's report. He reported that the board reviewed the draft report at the last meeting and decided their response regarding the draft. We also submitted a 60-day response, as required by the State Auditor, noting the report was distributed to the board and would be discussed at the next board meeting. We also noted the status as "not fully implemented" with an unknown finish date. The next responses are due July 31 and January 31, 2020.

Aaron Fellner and Matt Gannon attended from the Auditor's office. Mr. Fellner stated there is proposed legislation such as AB 1867, that would assist C-ROB and the OIG in following-up with the auditor's recommendations. He also stated that they only audited the in-prison programs, not mental health patients.

Mr. Wesley stated that we will see if additional funding and authority are approved by the legislature to provide the resources C-ROB needs to implement the auditor's recommendations.

Item 7. Board discussion regarding the C-ROB Mission & Vision Statements

Mr. Spurling led the discussion regarding the mission and vision statements. He stated that he compiled a few suggestions from ideas submitted by the board members. He reminded the board that the vision statement should represent the dream we have for C-ROB, while the mission statement will share how and why we will carry out the vision.

The board discussed the various suggestions. They discussed what they'd like C-ROB to be able to do in comparison with what it's statutorily authorized to do.

Item 8. Board decision regarding the C-ROB Mission & Vision Statements

The board tabled this decision to a future board meeting.

Item 9. Presentation: California Department of Corrections and Rehabilitation

Kevin Hoffman presented the In-Prison Programming Overview. He stated that the department is aware of the need for data-driven decisions. He shared a video of programs offered. Mr. Hoffman presented an overview of all the in-prison programs CDCR offers, such as Long-Term Offender

Programs, Offender Mentor Certification Program, Arts in Corrections, and Cognitive Behavior Therapy. He showed a video regarding innovative grant programs, Arts in Corrections and Paws for Life.

Jon Grobman and Alex Toner presented with Mallie (a canine participant) for Paws for Life. Mr. Grobman stated that 15 inmates will get to go home early due to this program. The inmates learn responsibility and team building as well as recognizing the behaviors that led them to being in prison. Mr. Grobman stated that the program affects the culture on the yard. It eliminates racism, creates family, calms inmates, builds teamwork and humanity, builds gaps between inmates and COs. Paws for Life teaches the inmates marketable skills they can use to make a viable wage once released; often about \$100 per hour.

Ms. Toner stated that she started the program five years ago to help dogs. The program rescues dogs and people. She partnered with Los Angeles City and County so inmates are guaranteed jobs when they are released. They can work for LA or they can use their skills to be dog trainers. A typical trainer wage is \$100 per hour, on the low end.

Ray Macias presented for HealthRight 360. He stated that he was sentenced to 15-to-life. He studied in prison, became a part of a mental health group and then began to see real change. He took advantage of programs once he was released, such as HealthRight 360. He continued with substance-use treatment and obtained a job cutting meat. He went to community college, got married and got his own apartment. He attributes his success after release to the programming and housing assistance he received after release.

Item 10. Future board meeting schedule

The board reviewed the remaining dates for 2019 board meetings: June 5 and September 4.

Item 11. Future agenda items

Mr. Wesley asked if the board members if they had any ideas for future agenda items. Ms. Grealish suggested a presentation on linking offenders to mental health plans and Dr. Arroyo suggested medication assisted therapies.

Item 12. Public Comment

Mary Lou Garcia commented that she would like a presentation on the importance of programming. She is concerned that C-ROB cannot address her concerns because they lack authority. She would like C-ROB to be able to take some action.

Hellan Roth Dowden stated she recognizes the changes and improvements to the programs. She stated that landscaping has just been reinstated because it wasn't until it was cut that people realized all the other skills that program taught. Ms. Dowden suggested that industry councils should verify the skills being taught are ones the inmates can use once released. She also suggested that an educator should be a member of the placement committee.

Item 13. Adjournment

The meeting was adjourned at 11:46am.

C-ROB Secretary

Dated

Agenda Item #6 & 7

C-ROB VISION STATEMENT

To return productive citizens to society and reduce inmate recidivism by evaluating and overseeing rehabilitative programming in California's state prisons, and promoting access to community resources and services upon release.

DRAFT

C-ROB MISSION STATEMENT

To apply C-ROB's collective knowledge and expertise to assist the department rehabilitate citizens and reduce recidivism by improving the development and delivery of effective rehabilitative programs and to support the development of effective inmate re-entry processes and programs in our communities.

DRAFT

Agenda Item #8

CROB

June 5th, 2019

California Rehabilitation Oversight Board



Division of Rehabilitative Programs

DRP

**COMMUNITY
REENTRY
SERVICES**



Community Reentry Services

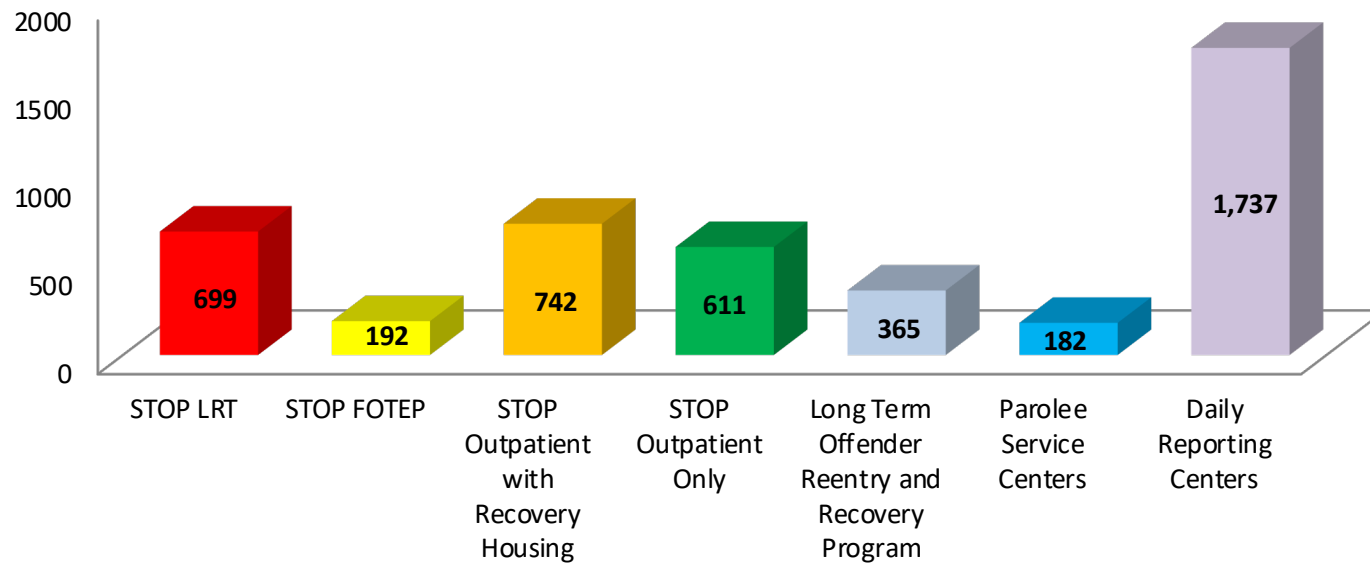
Community Reentry Services aim to provide comprehensive **post-release** rehabilitative programs and services located in communities throughout the state of California, delivered through residential, outpatient, and drop-in centers.



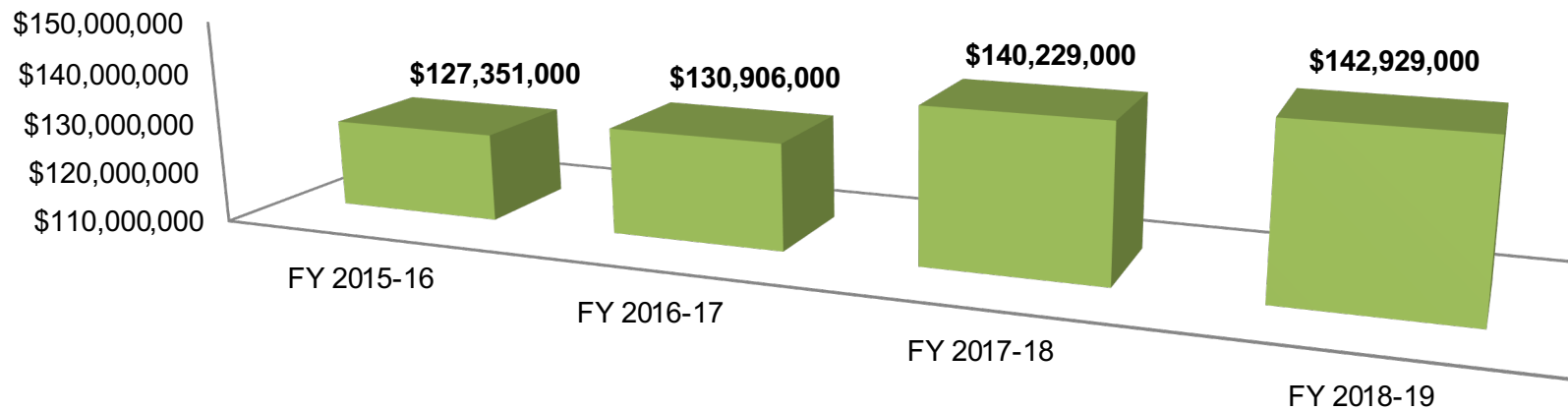
Community Reentry Programs Overview

Total Slots: 4,528

Budgeted ADP Slots



Community Reentry Funding



■ Total Community Reentry Funding (Includes Reimbursements)



Community Reentry | PROGRAMS

STOP

Specialized Treatment for Optimized Programming:

STOP assists parolees during their transition into the community. Includes substance use disorder treatment, detoxification, health education, life skills, family and group counseling, sober living housing and more.

DRC

Day Reporting Centers:

DRC addresses the assessed needs of parolee participants. Services include counseling, education, family reintegration, substance use disorder education, life skills training, and more.

THP

Transitional Housing Program:

THP provides residency and support services that focus on long-term offender needs such as employment, job search and placement training, stress management, victim awareness, computer supported literacy, and life skills.

PSC

Parolee Service Center:

PSC provides residency and support services for parolees that focus on employment, substance use disorder education, stress management, victim awareness, computer supported literacy, and life skills.

Continued on next page...



Community Reentry | PROGRAMS

FOTEP

Female Offender Treatment and Employment Program:
FOTEP provides a smooth transition for female offenders from custody to the community, focusing on intensive, gender-responsive counseling services.

CalT

Caltrans Work Crew Program:
This program provides transitional employment through litter abatement services for the California Department of Transportation.

STAR

Substance Abuse Treatment and Recovery Program:
STAR provides relapse prevention education to parolees with substance use disorder treatment needs.

CLLC

Computer Literacy Learning Center:
CLLC provides classroom instruction that focuses on basic proficiency in reading, writing, and math.



Community Reentry | PROGRAMS

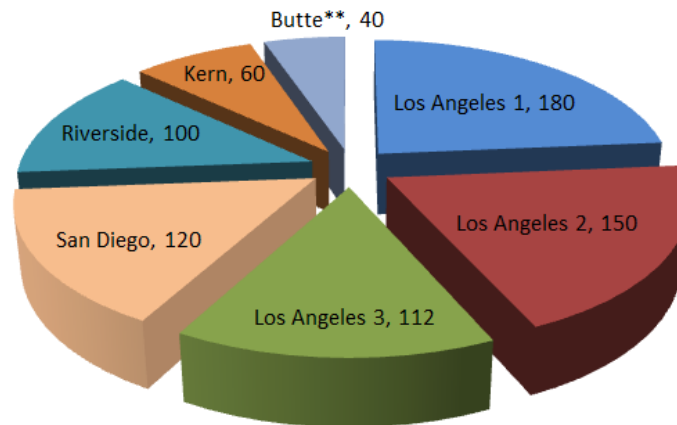
MCRP

Male Community Reentry Program:

MCRP aims to help inmates successfully reenter the community by allowing eligible inmates committed to a CDCR institution to serve the end of their sentence (up to one year) in the community in lieu of confinement at a CDCR institution. The MCRP is designed to provide a range of community-based, rehabilitative services that assist with substance use disorder treatment, mental health care, medical care, employment, education, housing, family reunification, and social support.

TOTAL POPULATION:
762

Location/Population*



**Proposed as of the May Revision subject to Budget Act Finality*

***Butte is a multi-county: Butte, Tehama, Nevada, Colusa, Sutter, Yuba, Glen*



Key Reentry Initiatives...

Ongoing Community Work/Initiatives:

- ✓ Expanded ARMS Use
- ✓ Parole Updates
- ✓ Prison-to-Employment
- ✓ STOP Provider & Medi-Cal ODS Engagement (Los Angeles)
- ✓ Community-Based Organization Engagement (Employment)

Continued Challenges:

- ✓ Housing First Policies/Reentry Treatment Programs
- ✓ Access to Non-State Funded Programs



CRS Initiative: Expanded ARMS Use

The Automated Reentry Management System (ARMS) is a centralized, web-based data system that streamlines rehabilitative treatment data collected by in-prison and community based providers. It is DRP's case management system solution that provides critical rehabilitation data used for improved statistical analysis, program performance and improvement, offender outcomes and is used by executive leadership for data-driven policy decision making. Since its inception, ARMS has been expanded to further improve upon delivery of services to the field. Expansion areas in ARMS includes:

- Transportation
- Reception
- General Use
- Operational Reports



CRS Initiative: Prison-to-Employment

Prison-to-Employment

The Prison to Employment Initiative aims to make California safer by ensuring that those that are justice involved (Probationers and Parolees) have access to jobs and learning opportunities upon their release. The goal is to reduce recidivism, eliminate future victims and increase public safety.

Initiatives

- Civil Service Testing
- Reentry Hand-Off
- CAAL-Skills Data Sharing

William Muniz,
CDCR Project Lead, Prison-to-Employment



CRS Initiative: Parole

Parole Community Reentry

Parole is refocusing efforts on the community reentry process and is currently developing reentry innovations and collaborations such as:

- Reentry Coordination Teams (Pre & Post Release)
- DAPO-DRP-BPH Life Term Parole Placements
- Workforce Development with P2E funding
- County/Medi-Cal Substance Use Disorder Treatment & Placement Development
- Fostering partnerships with community reentry stakeholders

Ryan Youtsey,
Parole Administrator, Reentry Coordination Program



Panel Discussion

Ryan Souza,
CDCR-DRP, Deputy Director

Doug Bond,
Amity Foundation, CEO

Michael Graff-Weisner,
Chrysalis, VP, Strategy & External Relations

Mark Wilson,
Coalition for Responsible Community Development,
President, CEO and Co-Founder



Amity on Broadway Specialized Treatment for Optimized Programing (STOP) Area 5

**Contracted and in collaboration with:
The California Department of
Corrections and Rehabilitation
(CDCR)**



Our Mission

Amity Foundation is dedicated to the inclusion and habilitation of people marginalized by addiction, trauma, criminality, incarceration, poverty, racism, sexism, homelessness and violence.

We strive to improve health, and promote environmental, social and economic justice.

Amity is committed to research, development, implementation and dissemination of information regarding community building.



Amity Settings

We consider ourselves a Teaching and Therapeutic Community. It is our mandate to teach community.

- 184 bed residential campus in Los Angeles CDCD funded
- 60 bed residential campus in Vista, CA (Probation, DMC and STOP)
- 55 bed transitional housing campus for “lifers” in Los Angeles (CDCR)
- 139 bed residential campus for men, women and families in Tucson, AZ (Medicaid, Tribal, Probation, DOJ)
- Over 400 units of housing (LA City and LA County)
- Community services for over 200 homeless women (SAMHSA)
- Nearly 2,500 men and women served in 5 prisons (CDCR)
- Nearly 500 California parolees in residential, detoxification, sober living, transitional housing, outpatient, and case management services At Amity on Broadway Specialized Treatment for Optimized Programming (STOP) Area 5 in Los Angeles
- Employment services located in Southern California (DOR and WIOA)
- Just In Reach jail project serving 360 chronically homeless men and women in LA County (DHS LA County and Social Impact Bond)
- 60 bed LA Entrada campus in Los Angeles for formally incarcerated females (opening January 2020) (FOPS)
- 150 bed reentry campus in Riverside under development



Amity on Broadway STOP Area 5

The Amity on Broadway community operates under the Specialized Treatment for Optimized Programming (STOP) contract serving men and women being released from the California Department of Corrections and Rehabilitation (CDCR) on state parole to all of Los Angeles County.

There are currently six (6) STOP Areas statewide welcoming state parolees back into the community, Amity on Broadway is “STOP Area 5” which specifically serves Los Angeles County only.



Amity on Broadway STOP Area 5 Enrollment

Amity on Broadway receives referral requests from all the state prisons and camps statewide for community based provider placement.

Amity screens them for eligibility, then confirms their placement at a provider that best suits their individual needs. We then arrange transportation for their release from prison, and with all the other STOP Areas throughout the state, meet them at the gate and welcome them back to the community.

Once our students arrive to the community based housing and/or treatment provider, we follow their progress, follow up with the community providers to align their reentry goals, and work with them to traverse any barriers they may encounter.



Amity on Broadway STOP Area 5 Functions

- Student/Parolee Advocacy
- Division of Adult Parole Operations (DAPO) Advocacy
- Community Based Provider (CBP) Advocacy
- Screening of “Direct Placements” from all CA Prisons
- Transportation Coordination and prison pickup “relays” to and from all STOP Areas to CBP’s
- Screening and placement through parole and Board of Prison Hearing (BPH) referrals
- Case Management, Assessments, Community Resource Coordination, Employment Services
- Subcontractor Compliance, Incident Reporting
- Billing/Invoicing



Amity on Broadway STOP Area 5 Providers

Currently, Amity on Broadway STOP Area 5 subcontracts with 34 different Agencies/Businesses in over 60 different physical locations and serves students at the following modalities:

- Licensed Substance Use Disorder Detoxification (LSUDD)
- Licensed Substance Use Disorder Treatment (LSUDT)
- Female Offender Treatment Employment Program (FOTEP)
- Recovery/ Housing
- Certified Substance Use Disorder Outpatient Treatment Services (CSUDT)
- Other Outpatient Services (OOP)



Reentry Navigation System

(Amity/CDCR/DHS Pilot)

What is Reentry Navigation System:

Services provided in partnership with Amity Foundation, The LA County Office of Diversion and Reentry, and the California Department of Corrections and Rehabilitation-Division of Parole Operations.

Pilot Locations:

- LA Central Parole Office
- Mid-City Parole Office



Reentry Navigation System

(Amity/CDCR/DHS Pilot)

Our responsibility is to provide wraparound services and system navigation that brings together health and social service providers across the County of Los Angeles to build a client-centered and community based system of care in order to deliver seamless, integrated and coordinated services.

Our main goals are to:

- Improve Health Outcomes
- Reduce Recidivism
- Create job and Career opportunities for formerly incarcerated people



Reentry Navigation System

(Amity/CDCR/DHS Pilot)

Navigation of Parole Office Referrals



Amity
Foundation

when people gather with good intent

Reentry Navigation System

(Amity/CDCR/DHS Pilot)

Through Intensive Case Management Services we provide Students with guidance to navigate through their journey in Reentry in the form of linkages, referrals and accompaniment (if needed) for;

Substance use Treatment DMC

Mental, Physical and Behavioral Health Providers

Social Service Providers such as GR, SSI, SSDI

Educational (Vocational ,Financial Education, GED, etc.)

Employment Support (mock interview, job leads, interviewing clothing, partner referrals)

Supportive Services (such as Food, Clothing); Vital documents: ID, SS Card, Birth Certificates

Housing Support Services is provided in the form of guidance through systems concerning Emergency shelters, Temporary Housing, DHS interim housing, DMH Temporary Shelter Program, LA Homeless Service Authority Bridge Housing, and Local Shelters, etc.





Reentry Navigation System

Services provided in partnership with Amity Foundation, the LA County Office of Diversion and Reentry, and the California Department of Corrections and Rehabilitation - Division of Parole Operations.

* Our Responsibility:

Is to provide wraparound services and system navigation that brings together health and social service providers across the County to build a client-centered and community based system of care in order to deliver seamless, integrated and coordinated services.

* Services We Offer:

Intensive Case Management Services/Navigation Services in the form of linkages, referrals and accompaniment (if needed) for;

- * Substance use Treatment
- * Mental, Physical and Behavioral Health Providers
- * Social Service Providers such as GR, SSI, SSDI
- * Educational (Vocational, Financial Education, GED, etc.)
- * Employment Support
- * Supportive Services (such as Food, Clothing)
- * Housing Support Services is provided in the form of guidance through systems concerning Emergency shelters, Temporary Housing, DHS interim housing, DMH Temporary Shelter Program, LA Homeless Service Authority Bridge Housing, and Local Shelters, etc.

Every Tuesday and Thursday

10:00 am—1:00 pm

**LA Central Parole District Office
2444 South Alameda Street, L.A., CA. 90058**

RSVP your referral with Gabriela Labrada, Project Coordinator
Via Email: GLabrada@Amityfdn.org or Cell: (213) 806-0737



**Amity
Foundation**
when people gather with good intent

Prison to Employment

- Collaboration with Workforce Investment Boards
- Collaboration with Community Based Providers
- Vocational Training
- Job Retention
- Livable wages
- Housing stability
- Successful outcomes



Amity on Broadway STOP Area 5



To

nk Yo



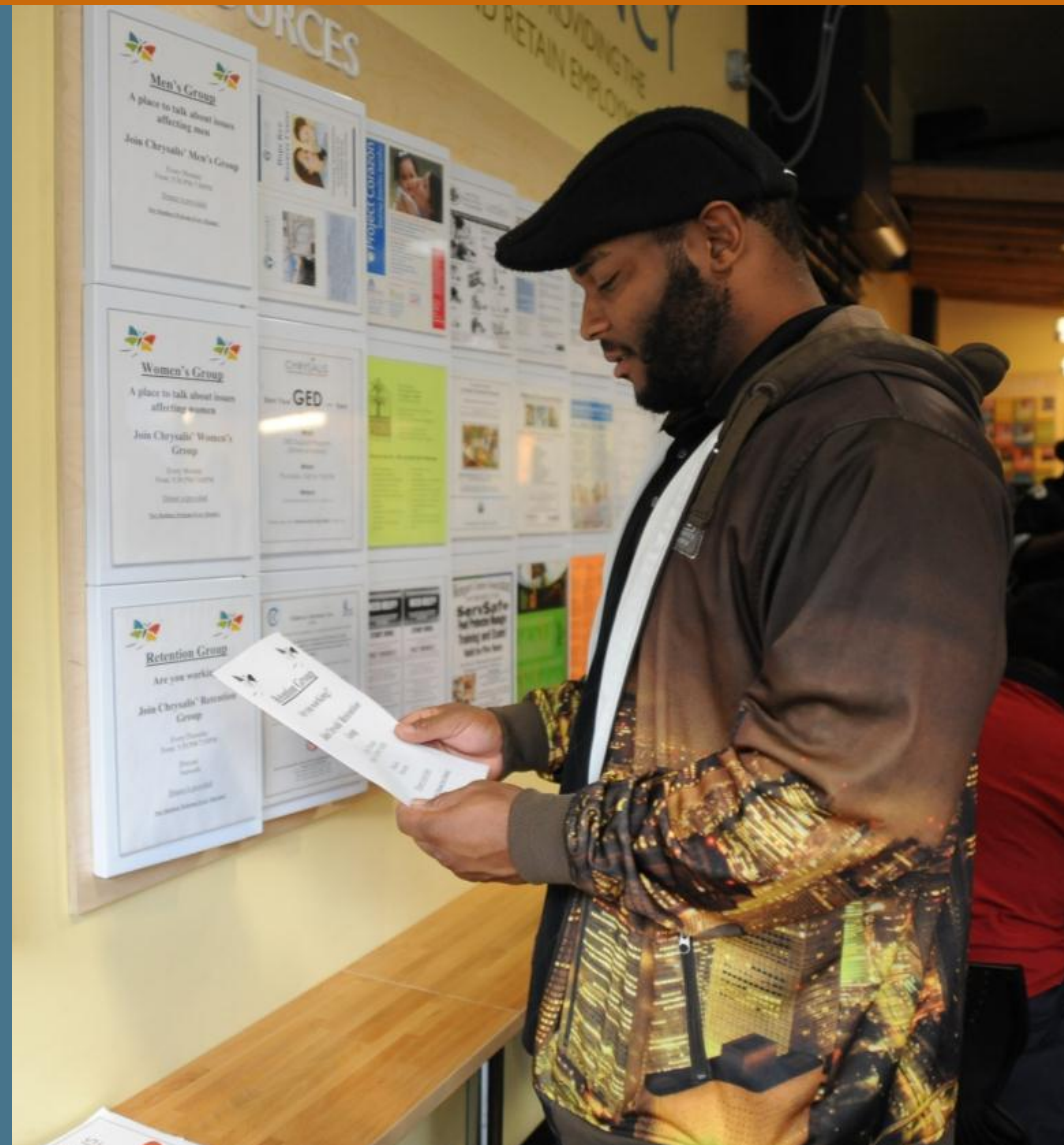


Reentry Employment Services Through Partnerships in Los Angeles

**California Rehabilitation Oversight Board (CROB)
Presentation on June 5th, 2019
Michael Graff-Weisner, VP of Strategy & External Relations**

Who Are We?

Chrysalis is dedicated to creating a **pathway to self-sufficiency** for **homeless and low-income** individuals by providing the resources and support needed to **find and retain employment**.



How We Serve:

A systematic approach to addressing the obstacles to employment one by one.



Core Supports:

RESUME PREP

PRACTICE INTERVIEWS

WORKSHOPS

COMPUTERS

PHONES

BUS TOKENS

MENTAL HEALTH

WORK WARDROBE

SCHOLARSHIP FUND

SUPPORT GROUPS

MAIL CENTER

TRAINING

LEGAL COUNSEL





Chrysalis Enterprises

A social enterprise that creates **transitional employment** opportunities.

These positions allows clients to develop job skills, rebuild confidence and develop **good professional habits**.



Where does CE fit in overall organization?




CHRYSALIS
ENTERPRISES


CHRYSALIS
STAFFING
A Business Division of Chrysalis Enterprises


CHRYSALIS
WORKS
A Business Division of Chrysalis Enterprises


CHRYSALIS
ROADS
A Business Division of Chrysalis Enterprises



CHRYSALIS

STAFFING

A Business Division of Chrysalis Enterprises

Types of Jobs

- Janitorial
- Hospitality
- Warehouse
- Clerical

Largest Staffing Customers

- SRO Housing Corporation
- Skid Row Housing Trust
- Other Affordable Housing Providers
- Gilmore & Associates

2018 Budget: \$2.2 Million





CHRYSALIS

WORKS

A Business Division of Chrysalis Enterprises

Types of Jobs

- Pan & Broom Sweeping
- Graffiti Removal
- Trash Removal
- Pressure Washing

Largest Works Customers

- Business Improvement Districts
- Neighborhood Cleanups & Beautification
- Special Events

2018 Budget: \$8.7 Million





Types of Jobs

- Litter Abatement
- Brush Removal
- Special Clean-Ups

Largest Roads Customers

- City of Los Angeles
- Caltrans – State & Local

2018 Budget: \$3.1 Million





Armando Martinez

Roads Supervisor



Our Results – 2018

1,388 worked a transitional job

\$6.5m wages earned by clients

2,119 clients secured employment

\$14.17 average wage

70% of clients were still working 6 months later



Key Partnerships & Leveraged Resources

We could not do the work we do without **collaborative partners**.

We manage partner relationships using **Salesforce** database.

Consistent and ongoing **communication** is key.





THANK YOU!!

Michael Graff-Weisner
VP, Strategy & External Relations
MichaelGW@ChangeLives.org
213-806-6341

ChangeLives.org





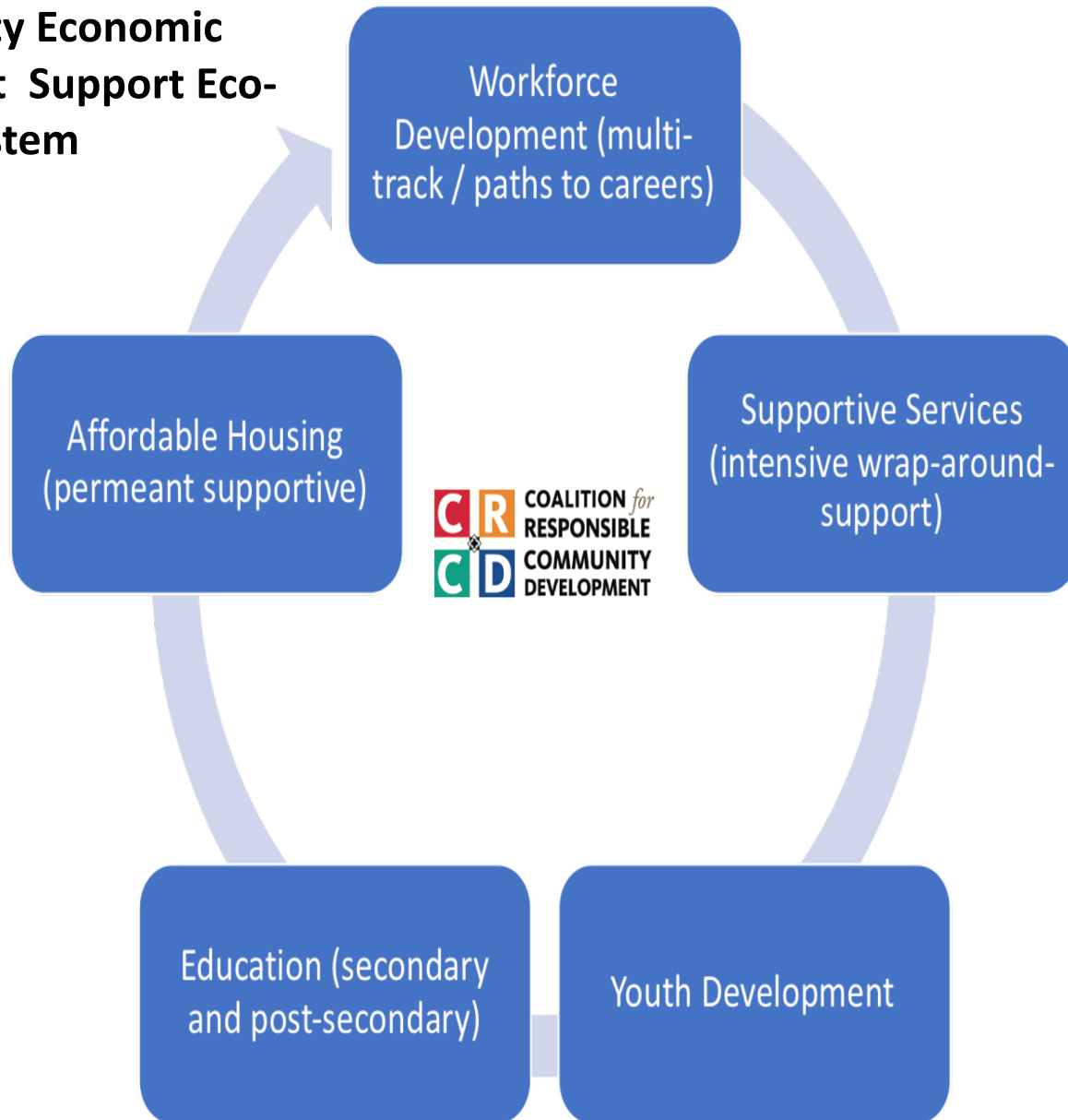
Changing Lives,
Building
Neighborhoods
Responsibly



A NONPROFIT COMMUNITY DEVELOPMENT
CORPORATION

**CRCD's mission is to better sustain,
coordinate and improve local planning,
development and community services that
address the needs of low-income residents
and small businesses in South Los Angeles.**

**Community Economic
Development Support Eco-
System**



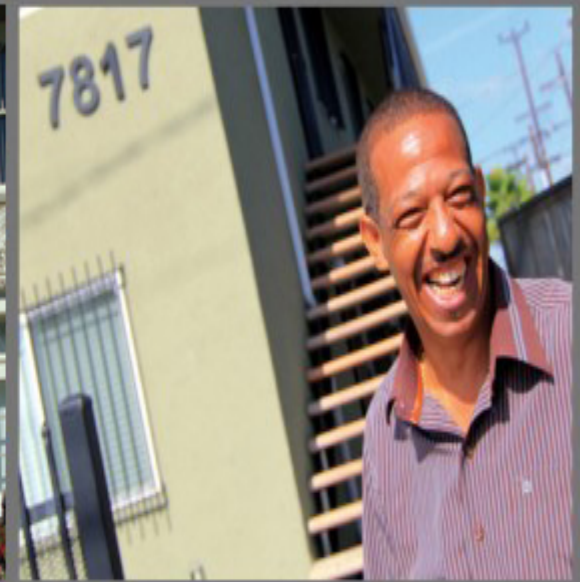


LOS ANGELES TRADE-TECH
LATTC
A Community College



**Educational Institution Partnership
Creating Pathways to Employment**





Innovative Partnerships in Creating Affordable Housing Opportunities For Individuals Most Vulnerable

- Homeless
- Veterans
- Returning Citizens (re-entry)
- Youth and Your





Collaborating to Create Effective Neighborhood Change



Mark A. Wilson
President / CEO

mwilson@coalitionrcd.org

[3101 South Grand Ave, Los
Angeles 90007](https://www.coalitionrcd.org)

www.coalitionrcd.org * 213-
743-6193

Division of Rehabilitative Programs



In closing, CRS leverages community based organizations and works collaboratively with them to increase public safety, lower recidivism and, ultimately, help offenders with a successful reentry into the community.



Agenda Item #10



Reentry Navigation System

Services provided in partnership with Amity Foundation, the LA County Office of Diversion and Reentry, and the California Department of Corrections and Rehabilitation -Division of Parole Operations.

* Our Responsibility:

Is to provide wraparound services and system navigation that brings together health and social service providers across the County to build a client-centered and community based system of care in order to deliver seamless, integrated and coordinated services.

* Services We Offer:

Intensive Case Management Services/Navigation Services in the form of linkages, referrals and accompaniment (if needed) for;

- * Substance use Treatment
- * Mental, Physical and Behavioral Health Providers
- * Social Service Providers such as GR, SSI, SSDI
- * Educational (Vocational ,Financial Education, GED, etc.)
- * Employment Support
- * Supportive Services (such as Food, Clothing)
- * Housing Support Services is provided in the form of guidance through systems concerning Emergency shelters, Temporary Housing, DHS interim housing, DMH Temporary Shelter Program, LA Homeless Service Authority Bridge Housing, and Local Shelters, etc.

Every Tuesday and Thursday

10:00 am—1:00 pm

**LA Central Parole District Office
2444 South Alameda Street, L.A., CA. 90058**

RSVP your referral with Gabriela Labrada, Project Coordinator
Via Email: GLabrada@Amityfdn.org or Cell: (213) 806-0737

AN INTRODUCTION TO CRCDD

The Coalition for Responsible Community Development (CRCDD) is a neighborhood-based community development corporation in the Vernon-Central neighborhood in South Los Angeles. The area is renowned for its role in Los Angeles history as the heart of the African-American community and home to the legendary Central Avenue Jazz Festival which is rooted in historic significance. Today, the area continues to celebrate its heritage but also is deeply impacted by concentrated poverty, a 19.3% unemployment rate, and 55 gangs. 89% of residents identify as Latino; 10% as Black/African American.

CRCDD has a unique focus on young people ages 14-24, and collaborates actively with residents, businesses, community-based organizations, civic leaders, and the local community college to improve the quality of life in South Central LA. Founded in 2005, CRCDD's mission is to better sustain, coordinate, and improve local planning, development, and community services that address the needs of low-income residents and small businesses in South Los Angeles.

CRCDD leads initiatives to foster a safe and economically vibrant neighborhood – a place where people can thrive and contribute to neighborhood revitalization. With effective partnerships, CRCDD promotes public safety and civic pride; trains and hires unemployed youth to remove graffiti and beautify the neighborhood; engages young people in education, training, and career-building; builds permanent supportive housing for Transition Age Youth including former foster youth and other low-income residents; and strengthens small businesses in the area to promote economic growth.

PROGRAMS

- **Workforce & Economic Development** – CRCDD operates the Vernon-Central/LATTC WorkSource Center to connect LA residents and the re-entry population to free training and job placement assistance.
- **Youth Development** – CRCDD provides access to a high school education at CRCDD Academy with co-enrollment and career-path training at partner LA Trade-Technical College to help young people ages 16-24 reduce barriers to employment and build careers. CRCDD also operates the VCN YouthSource Center and the South LA YouthBuild program to provide youth and young adults with access to education, career path training, and jobs. The organization partners with the City Attorney on alternative sentencing and restorative justice programs.
- **Real Estate** – In 2007 CRCDD began developing affordable rental housing with on-site supportive services for Transition Age Youth and affordable housing for other low-income residents. The organization currently owns and operates 9 developments which represent a combined investment of \$103 million in South LA. In addition to the 316 units of affordable housing the projects provide to the community, they supply case management services and on-site program facilities. CRCDD also assists small businesses on the historic jazz corridor of Central Avenue to promote economic growth. CRCDD was instrumental in establishing a Central Avenue Business Improvement District to assist area merchants and property owners.
- **Support Services** – CRCDD provides on-site support services to residents of its permanent supportive housing complexes to promote economic self-sufficiency, housing stability, and family well-being. CRCDD also operates Ruth's Place, a drop-in center for young people ages 18-24 who are homeless, where we can address basic needs and provide assistance with housing and access to services.

CRCDD launched a social enterprise, ***CRCDD Enterprises***, in 2010 to create jobs for youth. CRCDD Enterprises is a State-licensed painting contractor providing commercial/residential painting and facilities management, including graffiti abatement, business district maintenance, office maintenance, unit turnover services, and related services.

<http://crddent.com>

Agenda Item #11



CALIFORNIA CORRECTIONAL
HEALTH CARE SERVICES



California
Department of Corrections
and Rehabilitation

Road To Recovery

Integrated Substance Use Disorder Treatment Program



DIANA TOCHE
Undersecretary, Health Care Services



Presentation Overview



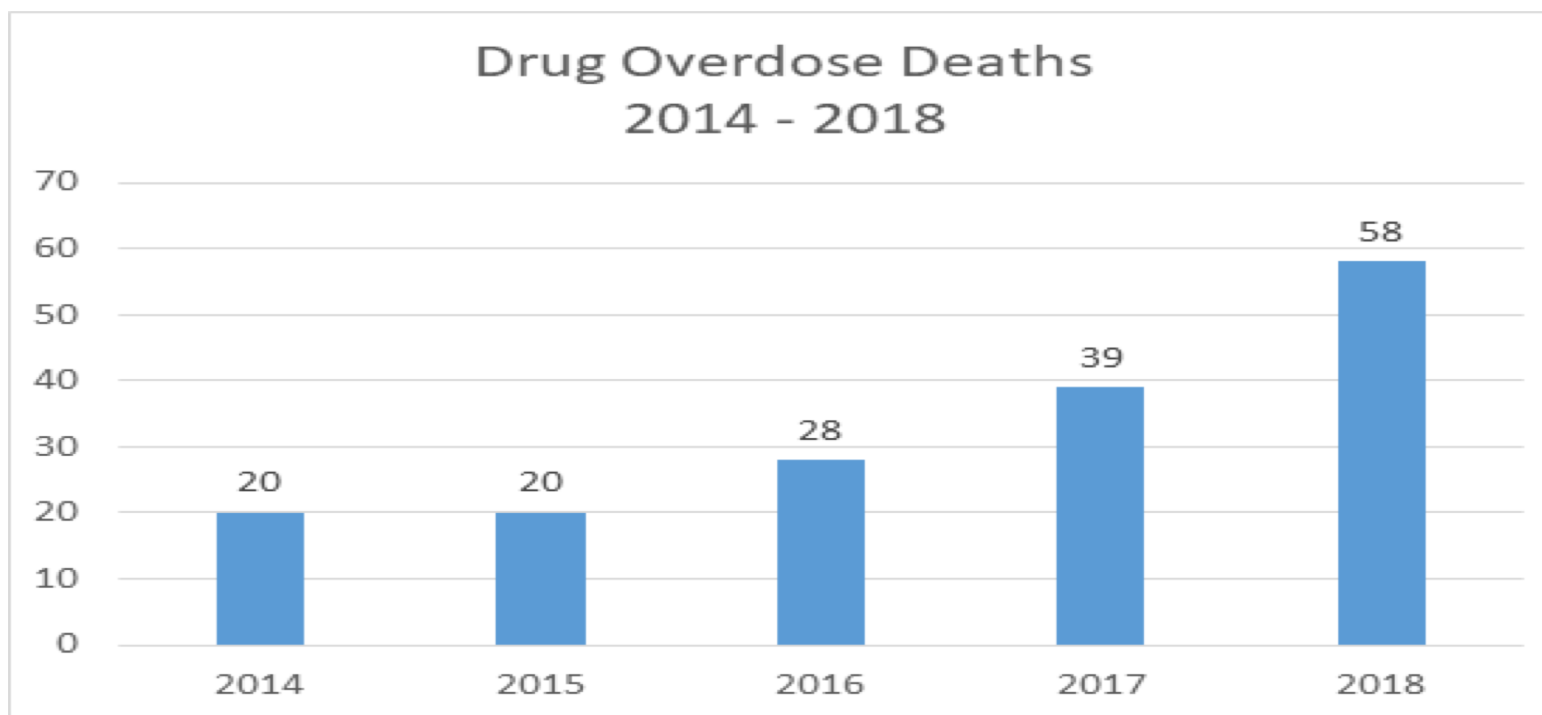
- Context for Change in CDCR & California
- SUD is a *Treatable* Chronic Disease
- Proposal for an Integrated Substance-Use Disorder Treatment Program (ISUDTP)



CALIFORNIA CORRECTIONAL
HEALTH CARE SERVICES

Context for Change

Drug Overdoses in CDCR – Upward Trend



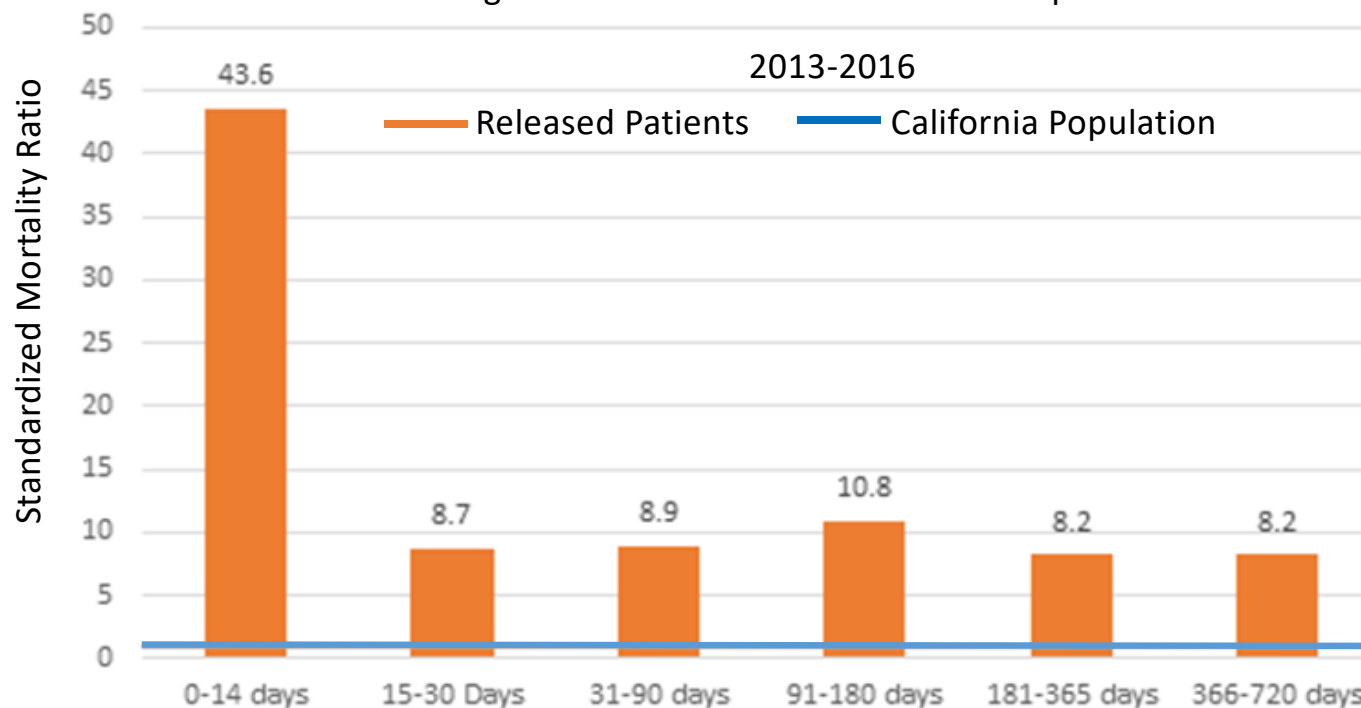
CALIFORNIA CORRECTIONAL
HEALTH CARE SERVICES

Context for Change

Death Rates High during Transition to Community



Overdose Deaths Among Persons Released from Prison Compared to California Population*



*Adjusted for age and sex
by post-release period



CALIFORNIA CORRECTIONAL
HEALTH CARE SERVICES

Context for Change In California



- Under the DMC-ODS, people with Medi-Cal have access to MAT (methadone, buprenorphine, and naltrexone), and other SUDT services
- DHCS through DMC-ODS includes expanding jail based MAT programs
- 27 of California's 58 counties have implemented DMC-ODS, which covers 88% of CA residents



CALIFORNIA CORRECTIONAL
HEALTH CARE SERVICES

SUD Is A Treatable Disease



- SUD involves dysregulation of dopamine in certain parts the brain
- Treatments for OUD & AUD with MAT and CBT are 60-75% effective in reducing relapse
- Methadone and Buprenorphine reduces overdose deaths by 50-70%
- Abstinence based “treatment” for OUD has high failure rate ~85%
- Access to MAT reduces drug diversion
- Cory Waller’s Addiction Neuroscience Video:
<https://www.bing.com/videos/search?q=corey+waller+addiction+neuroscience+101&&view=detail&mid=1D607913C039FB7D35DD1D607913C039FB7D35DD&&FORM=VRDGAR>

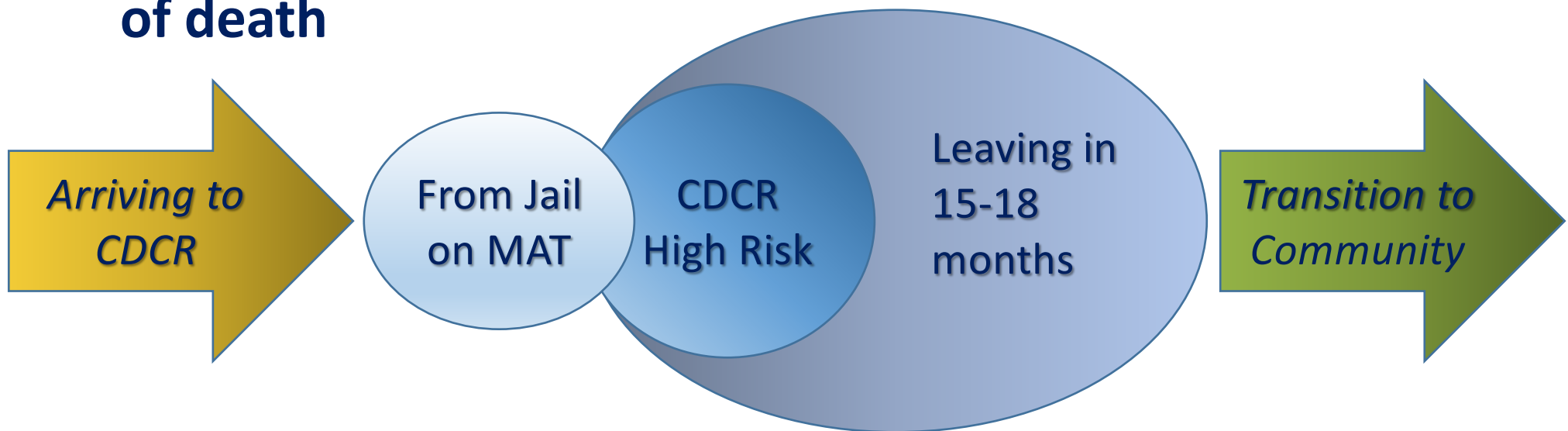


CALIFORNIA CORRECTIONAL
HEALTH CARE SERVICES

Proposal For ISUDTP



Initially Focus on 3 Patient Populations at **Highest-risk of death**



CALIFORNIA CORRECTIONAL
HEALTH CARE SERVICES

Proposal for ISUDTP



Care Management and Care Coordination	Screen & Assess 38,000/yr	<ul style="list-style-type: none"> • Screen and assess risk • If mod-high risk, assign to appropriate level of care using ASAM criteria • Determine need for Medication Assisted Treatment (MAT) • Assign to appropriate institution based on care needs
	Treat 16,000/yr	<div>Intensive Outpatient ↔ Outpatient</div> <div>All institutions</div> <div>MAT available at all 35 institutions</div>
	Transition Coordination 38,000/yr	<p>Health care transition teams partner with parole/probation, county liaisons, and others to successfully reintegrate individuals back to community.</p> <ul style="list-style-type: none"> • Enroll & activate in Medi-Cal • Schedule health care appointments • Secure housing • Engage family and peer support • Transitional guidance on finances, employment, education • Arrange transport

Questions



CALIFORNIA CORRECTIONAL
HEALTH CARE SERVICES